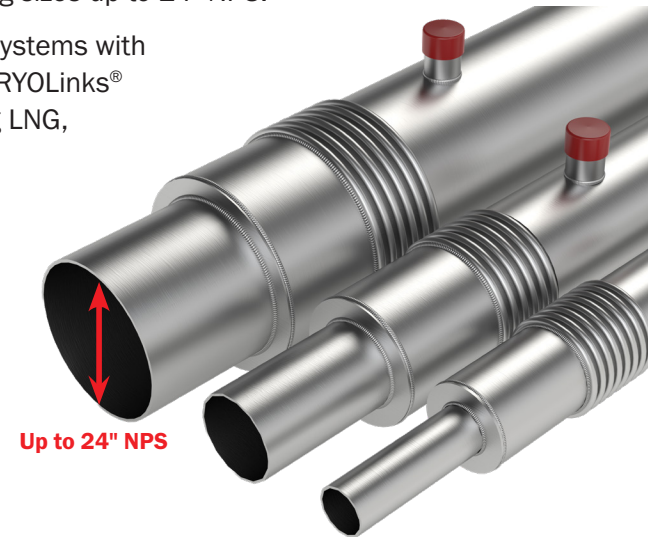


Introducing CRYOLinks® MAX, the latest advancement in cryogenic piping systems from Crane Cryogenics™. Engineered for exceptional performance in the most demanding environments, it delivers rigid pre-engineered sticks in customizable lengths up to 40ft and industrial piping sizes up to 24" NPS.

Our off-the-shelf design outperforms traditional mechanically insulated systems with faster production, shorter lead times, and superior cost-effectiveness. CRYOLinks® MAX provides unmatched reliability across critical applications, including LNG, Space Launch, and Aerospace operations from fixed and mobile launch facilities to engine testing and commodity transfer at space launch complexes.

Features:

- Standard line sizes range from 1" NPS to 24" NPS inner-line pipe.
- Available from 2ft sticks to 40ft sticks, in various quantities.
- Pre-engineered for minimal lead times.
- Ideal for all cryogenic applications.
- Fabricated to ASME B31.3 or B31.12.
- All inner line pipe schedules available compared to standard CryoLinks® product.
- Joints can be easily mechanically insulated.
- End connections: Butt weld pipe stubs.



Benefits:

- Approximately 50 times more effective than conventional foam insulation in preventing heat gain to the inner line and nearly 200 times more effective than bare copper lines.
- Extremely long-lasting and impervious to UV degradation in comparison to mechanical insulation.
- Minimize cool-down losses.
- Standard Industrial cleaned and kept.

Available Accessories/Options:

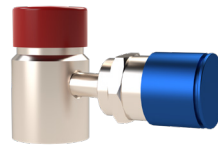
- Spring-loaded Evac Port Covers
- Bellows Covers
- **Please see "How To Order" form for all available options and accessories.**



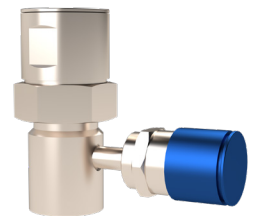
Plain Evac Port



Evac Port w/ DV-6R



Evac Port w/ DV-6S

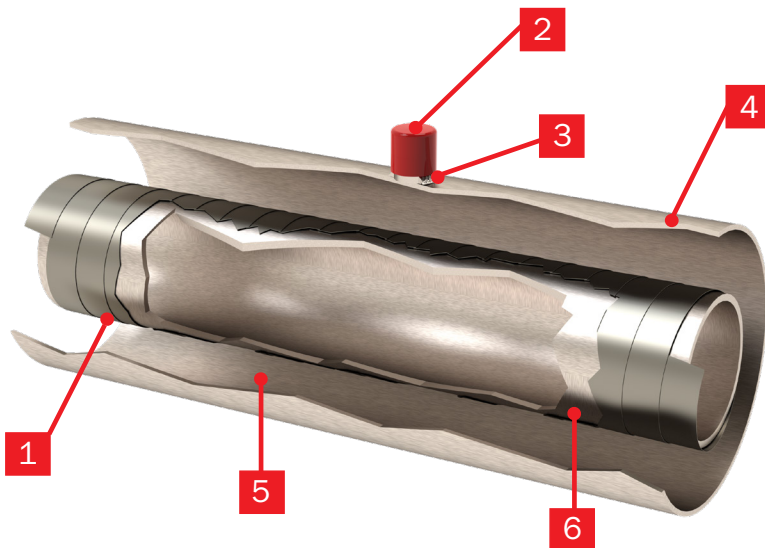


Evac Port w/ Spring Cap & DV-6S

Heat Leak - Technical Data

Line Size (NPS)	Jacket Size (NPS)	Heat Leak BTU/hr*ft (W/m)				
		LN2	LOX	LH2	LHe	LCH4
1	2	0.345 (0.332)	0.345 (0.332)	0.436 (0.419)	0.461 (0.443)	0.205 (0.197)
2	3	0.586 (0.563)	0.586 (0.563)	0.740 (0.711)	0.783 (0.753)	0.348 (0.334)
3	4	0.841 (0.809)	0.841 (0.809)	1.063 (1.022)	1.125 (1.082)	0.499 (0.480)
4	5	1.068 (1.026)	1.068 (1.026)	1.348 (1.296)	1.427 (1.372)	0.634 (0.609)
6	8	1.536 (1.477)	1.536 (1.477)	1.940 (1.865)	2.053 (1.974)	0.912 (0.877)
8	10	1.983 (1.906)	1.983 (1.906)	2.504 (2.408)	2.651 (2.549)	1.177 (1.132)
10	12	2.462 (2.367)	2.462 (2.367)	3.110 (2.990)	3.292 (3.165)	1.461 (1.405)
12	16	2.882 (2.771)	2.882 (2.771)	3.640 (3.499)	3.853 (3.705)	1.710 (1.645)
14	16	3.196 (3.073)	3.196 (3.073)	4.036 (3.881)	4.273 (4.108)	1.897 (1.824)
16	18	3.645 (3.505)	3.645 (3.505)	4.603 (4.426)	4.873 (4.686)	2.163 (2.080)
18	20	4.094 (3.937)	4.094 (3.937)	5.171 (4.972)	5.474 (5.263)	2.430 (2.337)
24	28	5.345 (5.140)	5.345 (5.140)	6.751 (6.491)	7.147 (6.872)	3.173 (3.051)
24	30	5.252 (5.050)	5.252 (5.050)	6.634 (6.379)	7.023 (6.752)	3.118 (2.998)

NPS = Nominal Pipe Size, Multi-Layer Insulation (MLI) = 20, Inner line temperature at respective fluid saturation at atmospheric pressure, Jacket temperature at ambient (70° F)



Item Description

Item	Description
1	Multi-Layer Super Insulation
2	Relief Port
3	Tig Welds
4	Stainless Steel Outer Pipe
5	Static High Vacuum Insulation
6	Stainless Steel Inner Pipe

Each CRYOLinks® MAX VJP transfer line is factory: fabricated, evacuated, tested, cleaned, and shipped in customer specified spool sections.

Is It Time To Install a CRYOLinks® MAX System at Your Location?

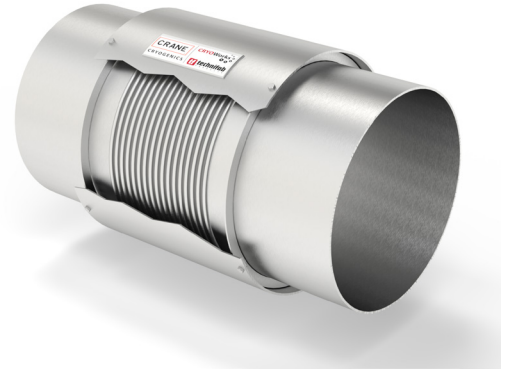
CRYOLinks® MAX is a pre-engineered piping system that delivers faster, more cost-effective cryogenic handling. By streamlining production and minimizing operational risks, it reduces lead time and long-term maintenance costs.

Selecting the right cryogenic fluid delivery system is critical to your operation's success. The correct system optimizes product costs, reduces handling labor, and ensures the safety of your team and equipment.

CRYOLinks® MAX is ideal for operations requiring:

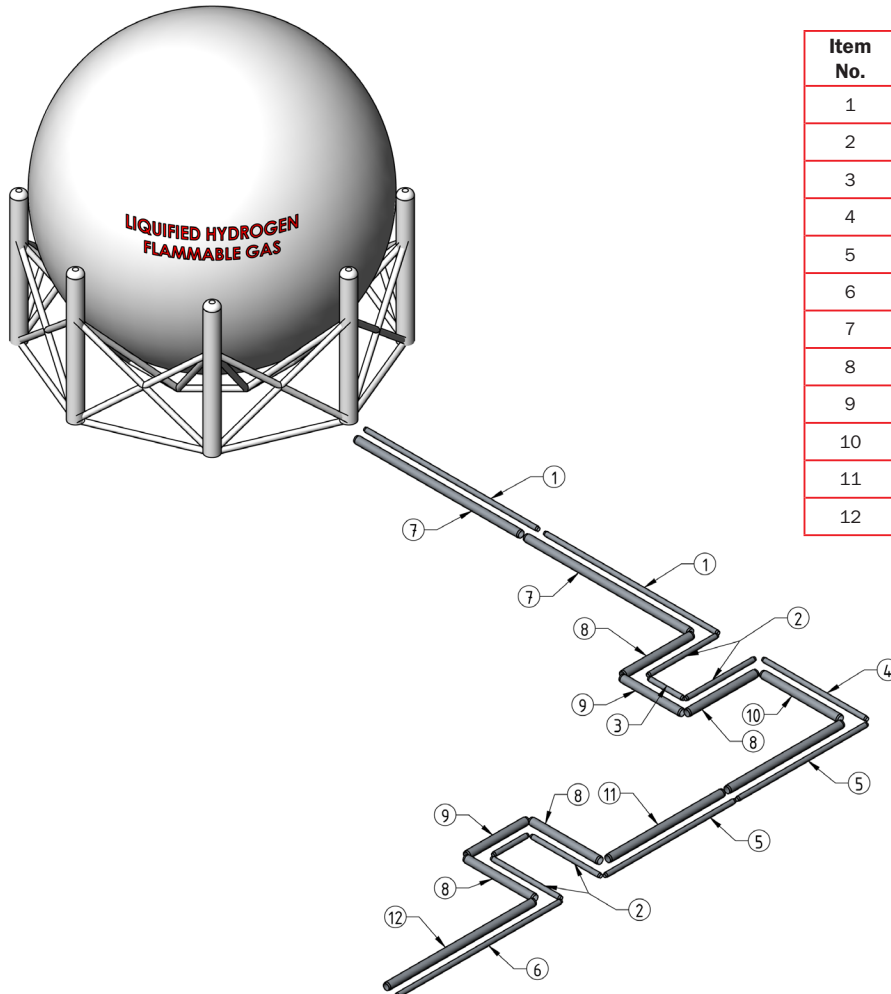
- Rigid piping with straight sticks
- Customizable lengths up to 40 ft
- Inner lines up to 24" NPS
- Reduced engineering and production time
- Faster lead times and quick deployment

Ready to see if CRYOLinks® MAX is right for your operation? Contact us using the form below, and our technical sales team will help you design the optimal system for your application.



Bellow Cover

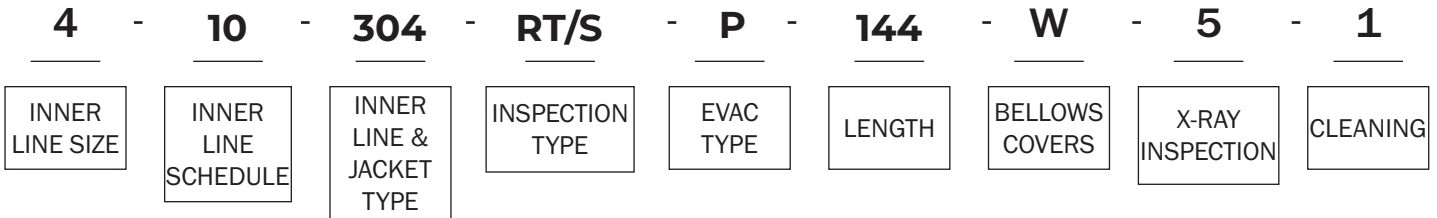
CRYOLinks® MAX System Schematic



Item No.	Qty.	Description	Length
1	2	8x10 CryoLinks® MAX	40 ft.
2	4	8x10 CryoLinks® MAX	16 ft.
3	2	8x10 CryoLinks® MAX	8 ft.
4	1	8x10 CryoLinks® MAX	24 ft.
5	2	8x10 CryoLinks® MAX	30 ft.
6	1	8x10 CryoLinks® MAX	38 ft.
7	2	16x18 CryoLinks® MAX	38 ft.
8	4	16x18 CryoLinks® MAX	16 ft.
9	2	16x18 CryoLinks® MAX	14 ft.
10	1	16x18 CryoLinks® MAX	18 ft.
11	2	16x18 CryoLinks® MAX	26.5 ft.
12	1	16x18 CryoLinks® MAX	34 ft.

CRYOLINKS NOMENCLATURE

Order Example:



4	10	304	RT/S	P																																																																		
<table border="1" style="width: 100%; text-align: left;"> <thead> <tr><th colspan="2">INNER LINE SIZE</th></tr> </thead> <tbody> <tr><td>1</td><td>1X2</td></tr> <tr><td>2</td><td>2X3</td></tr> <tr><td>3</td><td>3X4</td></tr> <tr><td>4</td><td>4X5</td></tr> <tr><td>6</td><td>6X8</td></tr> <tr><td>8</td><td>8X10</td></tr> <tr><td>10</td><td>10X12</td></tr> <tr><td>12</td><td>12X16</td></tr> <tr><td>14</td><td>14X16</td></tr> <tr><td>16</td><td>16X18</td></tr> <tr><td>18</td><td>18X20</td></tr> <tr><td>20</td><td>20X24</td></tr> <tr><td>24/28</td><td>24X28</td></tr> <tr><td>24/30</td><td>24X30</td></tr> </tbody> </table>	INNER LINE SIZE		1	1X2	2	2X3	3	3X4	4	4X5	6	6X8	8	8X10	10	10X12	12	12X16	14	14X16	16	16X18	18	18X20	20	20X24	24/28	24X28	24/30	24X30	<table border="1" style="width: 100%; text-align: left;"> <thead> <tr><th colspan="2">INNER LINE SCHEDULE</th></tr> </thead> <tbody> <tr><td>5</td><td>5S</td></tr> <tr><td>10</td><td>10S</td></tr> <tr><td>40</td><td>40S</td></tr> <tr><td>80</td><td>80S</td></tr> <tr><td>160</td><td>160</td></tr> <tr><td>XXH</td><td>XXS/XXH</td></tr> </tbody> </table>	INNER LINE SCHEDULE		5	5S	10	10S	40	40S	80	80S	160	160	XXH	XXS/XXH	<table border="1" style="width: 100%; text-align: left;"> <thead> <tr><th colspan="2">INNER LINE & JACKET TYPE</th></tr> </thead> <tbody> <tr><td>304</td><td>304/304L SST</td></tr> <tr><td>316</td><td>316/316L SST</td></tr> </tbody> </table>	INNER LINE & JACKET TYPE		304	304/304L SST	316	316/316L SST	<table border="1" style="width: 100%; text-align: left;"> <thead> <tr><th colspan="2">INSPECTION TYPE</th></tr> </thead> <tbody> <tr><td>W</td><td>WELDED</td></tr> <tr><td>RT/S</td><td>RT SEAM WELD/ SEAMLESS</td></tr> </tbody> </table>	INSPECTION TYPE		W	WELDED	RT/S	RT SEAM WELD/ SEAMLESS	<table border="1" style="width: 100%; text-align: left;"> <thead> <tr><th colspan="2">EVAC TYPE</th></tr> </thead> <tbody> <tr><td>P</td><td>PLAIN EVAC PORT</td></tr> <tr><td>6R</td><td>EVAC PORT W/ DV-6R</td></tr> <tr><td>6S</td><td>EVAC PORT W/ DV-6S</td></tr> <tr><td>6SWC</td><td>EVAC PORT W/ SPRING CAP & DV-6S</td></tr> </tbody> </table>	EVAC TYPE		P	PLAIN EVAC PORT	6R	EVAC PORT W/ DV-6R	6S	EVAC PORT W/ DV-6S	6SWC	EVAC PORT W/ SPRING CAP & DV-6S
INNER LINE SIZE																																																																						
1	1X2																																																																					
2	2X3																																																																					
3	3X4																																																																					
4	4X5																																																																					
6	6X8																																																																					
8	8X10																																																																					
10	10X12																																																																					
12	12X16																																																																					
14	14X16																																																																					
16	16X18																																																																					
18	18X20																																																																					
20	20X24																																																																					
24/28	24X28																																																																					
24/30	24X30																																																																					
INNER LINE SCHEDULE																																																																						
5	5S																																																																					
10	10S																																																																					
40	40S																																																																					
80	80S																																																																					
160	160																																																																					
XXH	XXS/XXH																																																																					
INNER LINE & JACKET TYPE																																																																						
304	304/304L SST																																																																					
316	316/316L SST																																																																					
INSPECTION TYPE																																																																						
W	WELDED																																																																					
RT/S	RT SEAM WELD/ SEAMLESS																																																																					
EVAC TYPE																																																																						
P	PLAIN EVAC PORT																																																																					
6R	EVAC PORT W/ DV-6R																																																																					
6S	EVAC PORT W/ DV-6S																																																																					
6SWC	EVAC PORT W/ SPRING CAP & DV-6S																																																																					
144	W	5	1																																																																			
<table border="1" style="width: 100%; text-align: left;"> <thead> <tr><th colspan="2">LENGTH</th></tr> </thead> <tbody> <tr><td>0.00</td><td>INCHES</td></tr> </tbody> </table>	LENGTH		0.00	INCHES	<table border="1" style="width: 100%; text-align: left;"> <thead> <tr><th colspan="2">BELLOWS COVERS</th></tr> </thead> <tbody> <tr><td>W</td><td>WITH</td></tr> <tr><td>WO</td><td>WITHOUT</td></tr> </tbody> </table>	BELLOWS COVERS		W	WITH	WO	WITHOUT	<table border="1" style="width: 100%; text-align: left;"> <thead> <tr><th colspan="2">X-RAY INSPECTION</th></tr> </thead> <tbody> <tr><td>5</td><td>5%</td></tr> <tr><td>100</td><td>100%</td></tr> </tbody> </table>	X-RAY INSPECTION		5	5%	100	100%	<table border="1" style="width: 100%; text-align: left;"> <thead> <tr><th colspan="2">CLEANING</th></tr> </thead> <tbody> <tr><td>1</td><td>INDUSTRIAL</td></tr> <tr><td>0</td><td>OXYGEN</td></tr> </tbody> </table>	CLEANING		1	INDUSTRIAL	0	OXYGEN																																													
LENGTH																																																																						
0.00	INCHES																																																																					
BELLOWS COVERS																																																																						
W	WITH																																																																					
WO	WITHOUT																																																																					
X-RAY INSPECTION																																																																						
5	5%																																																																					
100	100%																																																																					
CLEANING																																																																						
1	INDUSTRIAL																																																																					
0	OXYGEN																																																																					

Order Example:

Part Number 4-10-304-RT/S-P-144-W-5-1

4x5 Inner Line, 10s Inner Line Schedule, 304/304L Stainless Steel Pipe, RT Seam Weld/ Seamless Inspection, Plain Evac Port, 144 Inches, With Bellows Covers, 5% X-Ray Inspection, Industrial Cleaning

Corporate Address
3309 Grapevine St
Jurupa Valley, CA
91752, USA
Tel.: (951) 360-0920
www.cranecryogenics.com

Crane ChemPharma & Energy, CRANE CRYOGENICS™

Crane Co., and its subsidiaries cannot accept responsibility for possible errors in catalogues, brochures, other printed materials, and website information. Crane Co. reserves the right to alter its products without notice, including products already on order provided that such alteration can be made without changes being necessary in specifications already agreed. All trademarks in this material are property of the Crane Co. or its subsidiaries. The Crane and Crane brands logotype, in alphabetical order, (ALOYCO®, CENTER LINE®, COMPAC-NOZ®, CRANE®, DEPA®, DUO-CHEK®, ELRO®, FLOWSEAL®, JENKINS®, KROMBACH®, NOZ-CHEK®, PACIFIC VALVES®, RESISTOFLEX®, REVO®, SAUNDERS®, STOCKHAM®, TRIANGLE®, UNI-CHEK®, WTA®, XOMOX®, CRYOWORKS®, and TECHNIFAB®) are registered trademarks of Crane Co. All rights reserved.