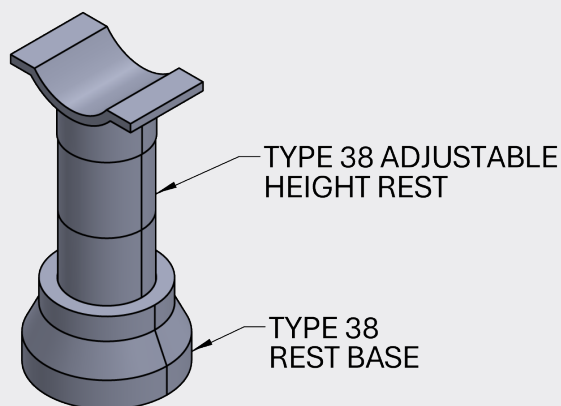


TYPE 38 REST



OVERVIEW

Size Range:	2" - 10" NPS
Material*:	Carbon Steel, Stainless Steel 304
Service	For use in functional vacuum insulated piping
Specifications	MSS-SP-58, MSS-SP-69
Ordering Information	sales@cranecryogenics.com rvargas@cryoworks.net

*Teflon, pvc, or stainless pads or coatings are available for CS supports to prevent galvanic corrosion of the stainless jacket pipe.

SPECIFICATIONS

Features:

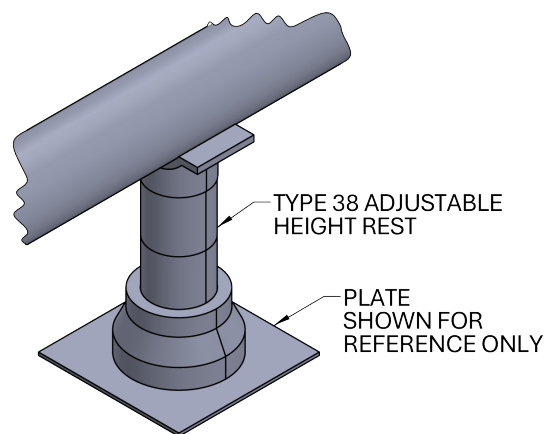
- Fixed Height
- Higher Allowable Loads
- Designed in accordance with MSS-SP-58
- Used to support the weight of the pipe

Allowable Temperatures:

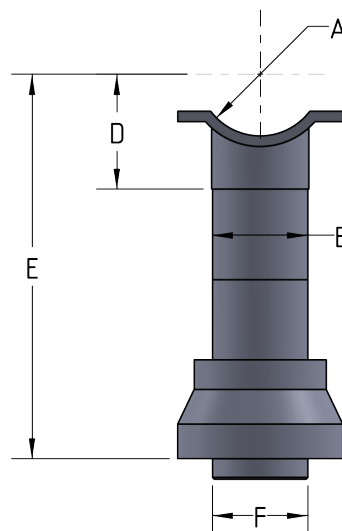
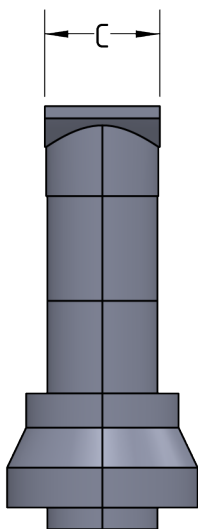
- -20°F Minimum Allowable Temperature Carbon Steel.
- -320°F Stainless Steel (will hold strength if supports get cold)
- 120°F Maximum Allowable Temperature
- Note VIP supports are to be used in 'ambient conditions'.

General Notes:

- The allowable load of the rest is driven by the field steel.
- Teflon and PVC pads accept the load rating of the field steel.



TYPE 38 REST



PIPE SIZE (NPS)	ADJUSTABLE HEIGHT REST						F (MIN CLEARANCE)	G	SUPPORT LOADS (-Y ONLY)
	A (RADIUS)	B	C	D	E				
					(MIN)	(MAX)			
4"	2 1/4"	3"	3 5/8"	4 3/16"	9 1/2"	14"	4"	1/8"	2500
5"	2 3/4"			4 13/16"	10 1/8"	14 5/8"			1200
6"	3 5/16"			5 7/16"	10 3/4"	15 1/4"			2900
8"	4 5/16"			6 15/16"	12 1/4"	16 3/4"			2900
10"	5 3/8"			8 7/16"	13 3/4"	18 1/4"			1950
12"	6 3/8"		9 15/16"	14 5/8"	19 1/8"	2350			
16"	8"		6"	11 1/2"	16 13/16"	21 5/16"			

NOTES:

1. FIELD WELD PROCEDURES BY OTHER.
2. FIELD WELDS TO BE PERFORMED TO IAW ASME BPVC SECTION IX.

