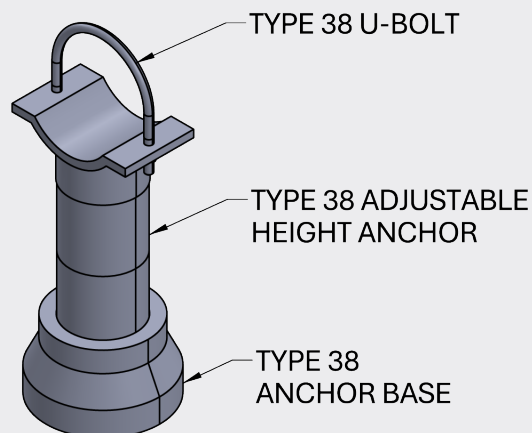


## TYPE 38 ANCHOR



### OVERVIEW

<b>Size Range:</b>	2" - 10" NPS
<b>Material*:</b>	Carbon Steel, Stainless Steel 304
<b>Service</b>	For use in functional vacuum insulated piping
<b>Specifications</b>	MSS-SP-58, MSS-SP-69
<b>Ordering Information</b>	sales@cranecryogenics.com rvargas@cryoworks.net

\*Teflon, pvc, or stainless pads or coatings are available for CS supports to prevent galvanic corrosion of the stainless jacket pipe.

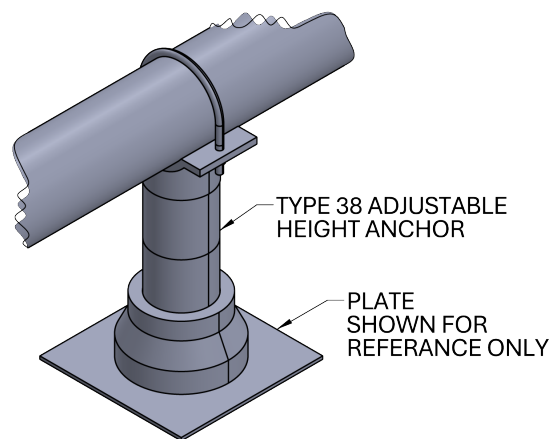
### SPECIFICATIONS

#### Features:

- Fixed Height
- Higher Allowable Loads
- Designed in accordance with MSS-SP-58
- Used to limit deflection and rotation in all directions

#### Allowable Temperatures:

- -20°F Minimum Allowable Temperature Carbon Steel.
- -320°F Stainless Steel (will hold strength if supports get cold)
- 120°F Maximum Allowable Temperature
- Note VIP supports are to be used in 'ambient conditions'.



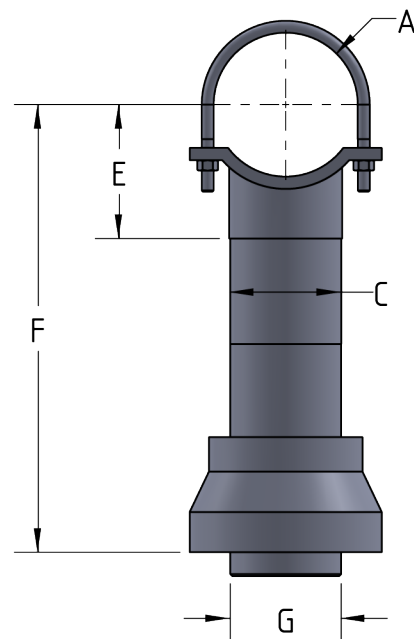
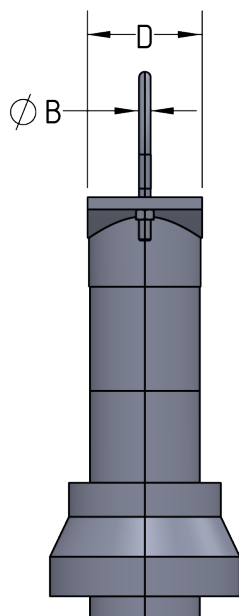
#### Caveats:

- All anchors require field welds by the installation contractor
- Anchor loads are listed in accordance with MSS-SP-58. It is the responsibility of the end user to ensure that suitable weld procedures have been used for anchor associated field welds.

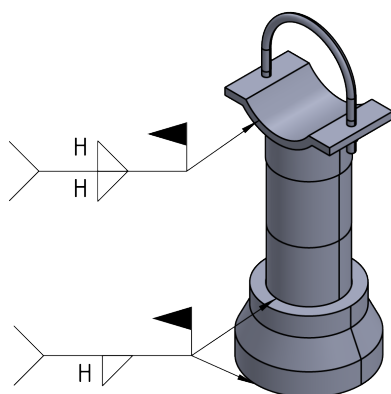
#### General Notes:

- All anchors require field welds by the installation contractor
- Anchor loads are listed in accordance with MSS-SP-58. It is the responsibility of the end user to ensure that suitable weld procedures have been used for anchor associated field welds.

## TYPE 38 ANCHOR



PIPE SIZE (NPS)	U-BOLT		ADJUSTABLE HEIGHT ANCHOR					H
	A (RADIUS)	B (DIAMETER)	C	D	E	F		
						(MIN)	(MAX)	
2"	2 7/16"	3/8"	1.90"	2 3/8"	8"	9 1/2"	14"	1/8"
3"	3 1/2"				8"	10 1/8"	14 1/2"	
4"	4 5/8"				6 3/4"	9 1/2"	14"	
5"	5 5/8"	1/2"	3"	3 1/2"	7"	10 1/8"	14 5/8"	
6"	6 3/4"				7"	10 3/4"	15 1/4"	
8"	8 3/4"				7"	11 3/4"	16 3/4"	



PIPE SIZE (NPS)	SUPPORT LOADS (-Y ONLY)	GUIDE LOADS	LINE-STOP LOADS
2"	2500	250	300
3"	1200	350	350
4"	2900	500	450
5"	2900	500	450
6"	1950	550	600
8"	2350	600	650

- NOTES:
1. FIELD WELD PROCEDURES BY OTHER.
  2. FIELD WELDS TO BE PERFORMED TO IAW ASME BPVC SECTION IX.