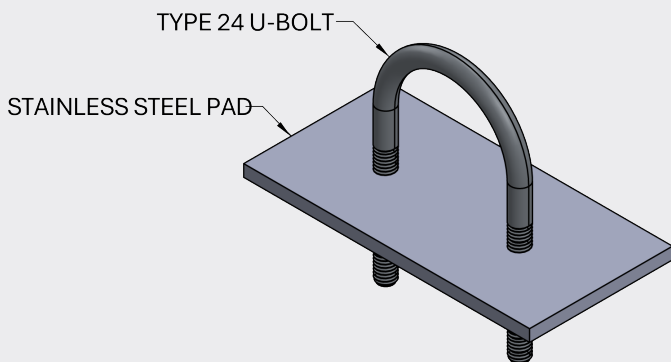


TYPE 24 GUIDE



OVERVIEW

Size Range:	2" - 10" NPS
Material*:	Carbon Steel, Stainless Steel 304
Service	For use in functional vacuum insulated piping
Specifications	MSS-SP-58, MSS-SP-69
Ordering Information	sales@cranecryogenics.com rvargas@cryoworks.net

*Teflon, pvc, or stainless pads or coatings are available for CS supports to prevent galvanic corrosion of the stainless jacket pipe.

SPECIFICATIONS

Features:

- Fixed Height
- Higher Allowable Loads
- Designed in accordance with MSS-SP-58
- Used to limit deflection in radial directions while allowing axial movement

Allowable Temperatures:

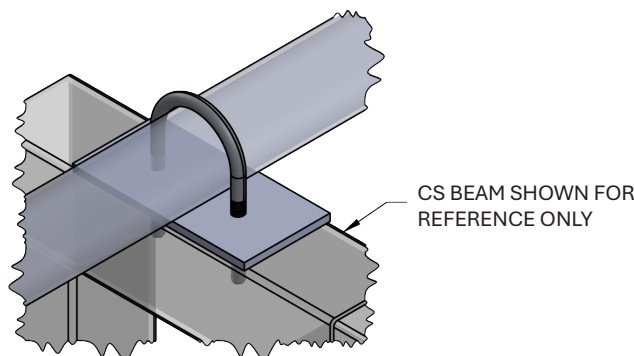
- -20°F Minimum Allowable Temperature Carbon Steel.
- -320°F Stainless Steel (will hold strength if supports get cold)
- 120°F Maximum Allowable Temperature
- Note VIP supports are to be used in 'ambient conditions'.

Caveats:

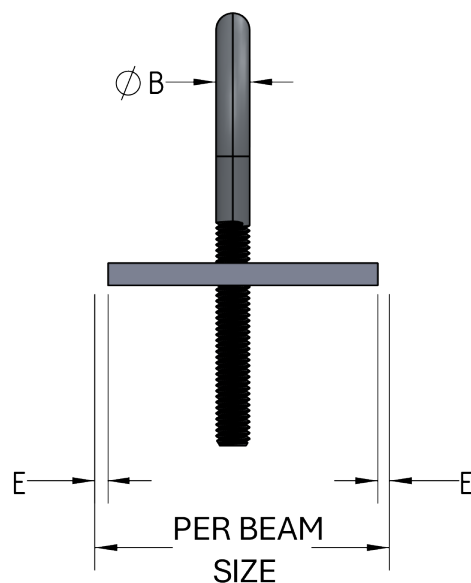
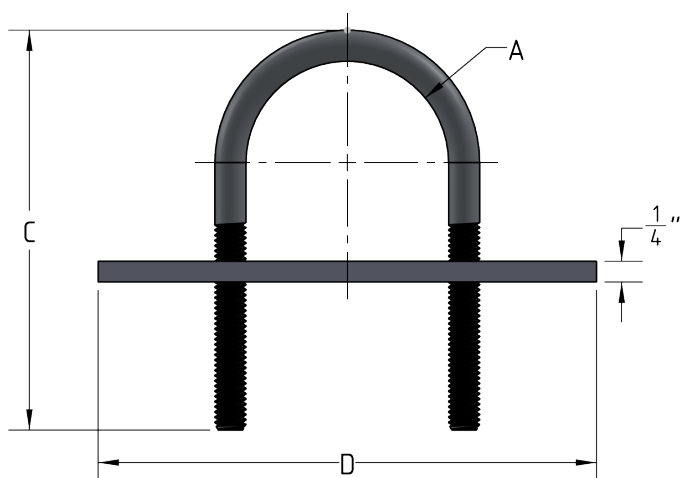
- Guides, not anchors. Guides do not have field welds.
- U-Bolts are rated by size, it is at the discretion of the end customer to oversize the guide.

General Notes:

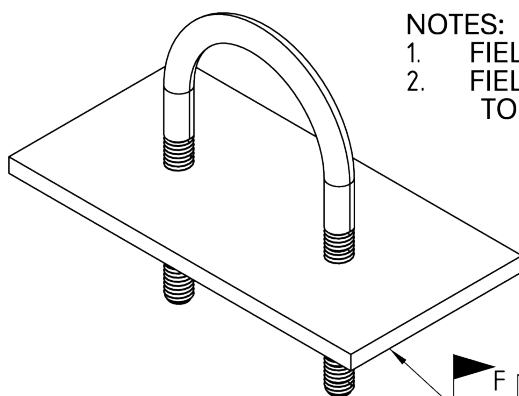
- Guide loads are listed in accordance with MSS-SP-58. It is the responsibility of the end user to ensure that the total load is suited for the guide and associated field steel.



TYPE 24 GUIDE



PIPE SIZE (NPS)	TYPE 24 U-BOLT			STAINLESS STEEL PAD		SUPPORT LOADS (-Y ONLY)	GUIDE LOADS
	A (RADIUS)	B (DIAMETER)	C	D	E		
2"	2 3/8"	3/8"	4 13/16"	6"	1/8"	1000	900
3"	3 1/2"		4 1/2"	7"		1750	1350
4"	4 1/2"		6 7/8"	8"		2450	2150
5"	5 9/16"	1/2"	7 3/4"	9"		2600	2100
6"	6 5/8"		8 7/8"	10"		2950	2350
8"	8 5/8"		10 7/8"	12"		2800	2400
10"	10 3/4"	3/4"	14 9/16"	14"		3300	2550
12"	12 3/4"	7/8"	16 15/16"	16"			



NOTES:

1. FIELD WELD PROCEDURES BY OTHER.
2. FIELD WELDS TO BE PERFORMED TO IAW ASME BPVC SECTION IX.

