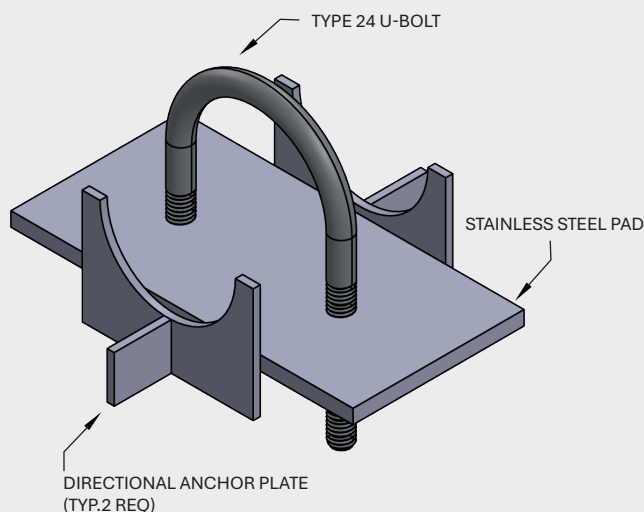


## TYPE 24 ANCHOR



### OVERVIEW

<b>Size Range:</b>	2" - 10" NPS
<b>Material*:</b>	Carbon Steel, Stainless Steel 304
<b>Service</b>	For use in functional vacuum insulated piping
<b>Specifications</b>	MSS-SP-58, MSS-SP-69
<b>Ordering Information</b>	sales@cranecryogenics.com rvargas@cryoworks.net

\*Teflon, pvc, or stainless pads or coatings are available for CS supports to prevent galvanic corrosion of the stainless jacket pipe.

### SPECIFICATIONS

#### Features:

- Fixed Height
- Higher Allowable Loads
- Designed in accordance with MSS-SP-58
- Used to limit deflection and rotation in all directions

#### Allowable Temperatures:

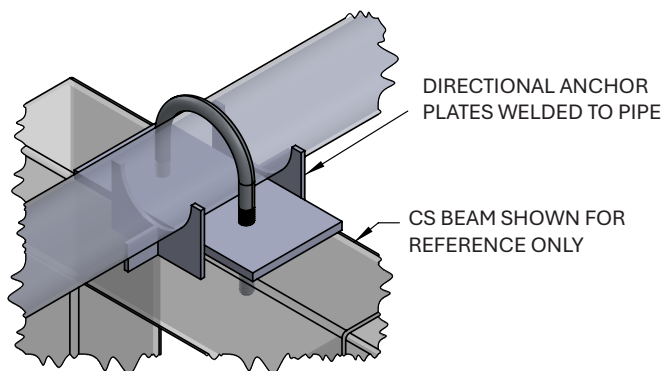
- -20°F Minimum Allowable Temperature Carbon Steel.
- -320°F Stainless Steel (will hold strength if supports get cold)
- 120°F Maximum Allowable Temperature
- Note VIP supports are to be used in 'ambient conditions'.

#### Caveats:

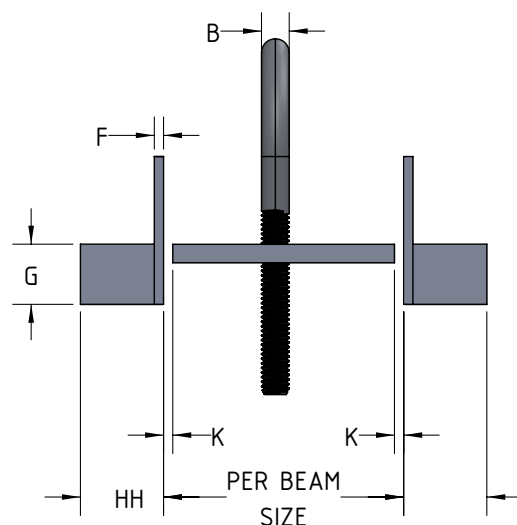
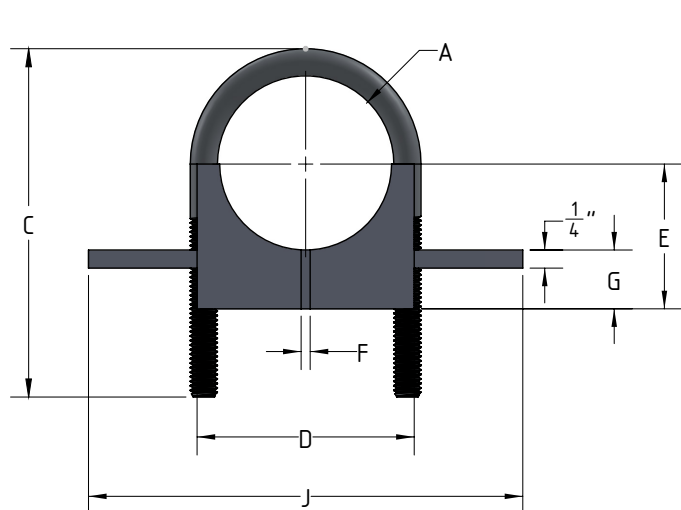
- All anchors require field welds by the installation contractor
- Anchor loads are listed in accordance with MSS-SP-58. It is the responsibility of the end user to ensure that suitable weld procedures have been used for anchor associated field welds.

#### General Notes:

- All anchors require field welds by the installation contractor
- Anchor loads are listed in accordance with MSS-SP-58. It is the responsibility of the end user to ensure that suitable weld procedures have been used for anchor associated field welds.

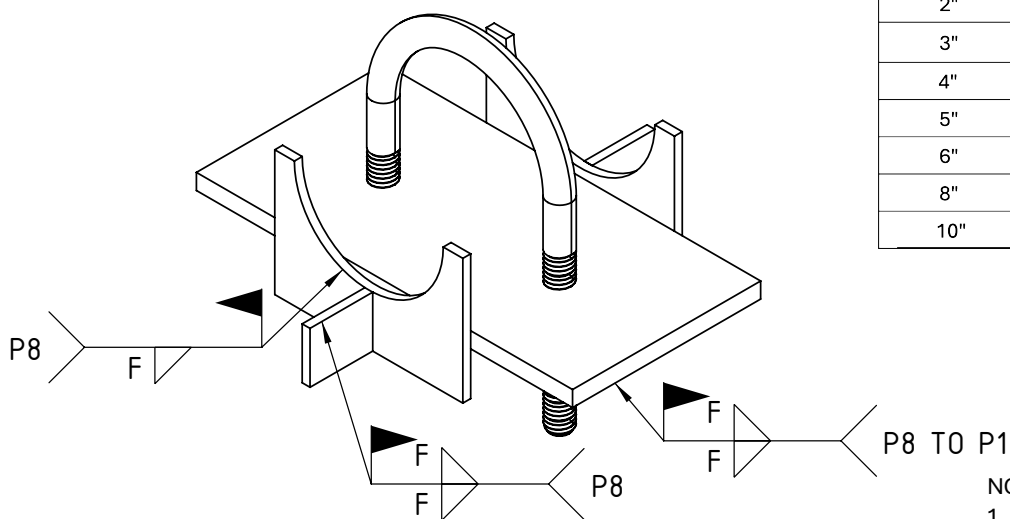


## TYPE 24 ANCHOR



PIPE SIZE (NPS)	TYPE 24 U-BOLT			DIRECTIONAL ANCHOR PLATE					STAINLESS STEEL PAD	
	A (RADIUS)	B	C	D	E	F	G	H	J	K
2"	1 3/16"	3/8"	4 13/16"	3"	2"	1/8"	13/16"	1 1/8"	6"	1/8"
3"	1 3/4"		4 1/2"	4 1/8"	2 9/16"				7"	
4"	2 1/4"		6 7/8"	5 1/8"	3 1/6"				8"	
5"	2 3/4"	1/2"	7 3/4"	6 1/8"	3 9/16"				9"	
6"	3 5/16"		8 7/8"	7 1/4"	4 1/8"				10"	
8"	4 5/16"		10 7/8"	9 1/4"	5 13/16"	3/16"	1 1/2"	2"	12"	
10"	5 3/8"	3/4"	14 9/16"	11 3/8"	6 7/8"				14"	

PIPE SIZE (NPS)	SUPPORT LOADS (-Y ONLY)	GUIDE LOADS	LINE-STOP LOADS
2"	1000	900	500
3"	1750	1350	700
4"	2450	2150	650
5"	2600	2100	1300
6"	2950	2350	1400
8"	2800	2400	1350
10"	3300	2550	1350



**NOTES:**

1. FIELD WELD PROCEDURES BY OTHER.
2. FIELD WELDS TO BE PERFORMED TO IAW ASME BPVC SECTION IX.