

Discover CryoWorks' range of Vacuum Seal-Off Valves and Operators, designed to deliver reliable and tamper-resistant vacuum entry solutions. Our components offer user-friendly functionality, ensuring seamless operation. Explore our selection of Vacuum Seal-Off Valves, Operators, Spring Loaded Caps, and Vacuum Gauge Tubes, designed to meet the specific needs of your technical applications.

Vacuum Seal-Off Valve

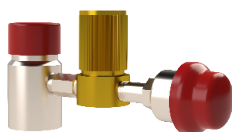
- Pressure: 1×10^{-8} TORR to 5 PSIG.
- Temperature: -20°F to 150°F.
- Leak Rate: 1×10^{-9} STD CC GHe/SEC.
- Connection: Weld (Standard).
- Add Optional SST Spring Loaded Cap for 1" Valve:
 - Provides additional weather protection
 - Evacuation port plug containment in the event of vacuum rupture.



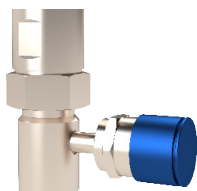
Vacuum Seal-Off Valve



Vacuum Seal-Off Valve with Side Port, with optional DV-6RS TC Vacuum Gauge Tube



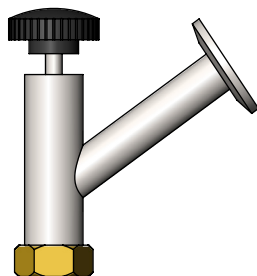
Vacuum Seal-Off Valve with Side Port, with optional Hoke® Bellows Seal Valve, and DV-6RS TC Vacuum Gauge Tube



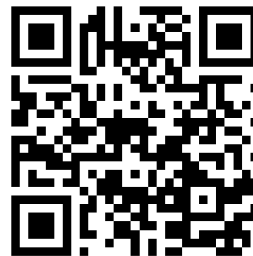
Vacuum Seal-Off Valve with Side Port, with optional Spring Loaded Cap, and DV-6S TC Vacuum Gauge Tube

Vacuum Seal-Off Operator

- Seamless connection between seal-off valve and vacuum pump, with easy seal plug removal and replacement during pump down.
- Available in 1/2" & 1" sizes.
- Various tube connection options available for vacuum pumps including: KF-25 ISO Flange ends (Standard).



Vacuum Seal-Off Operator with KF-25 Outlet



**View available options
and order via Shop.CryoWorks.Net**

Thermocouple (TC) Vacuum Gauge Tube

- Ability to check vacuum reading after being sealed.
- Ideal for trouble shooting and for system audits.
- Popular Vacuum Gauge Tubes:
 - Teledyne DV-6RS: 0-1000 mTorr, 1/8" NPT, Ruggedized.
 - Teledyne DV-6S: 0-1000 mTorr, 1/8" NPT, Weather Proof Outdoor, Rugged Construction with Protective Cap.
 - Televac® VacuMini 2A: 1×10^{-3} up to 20 Torr
- Optional Thermocouple Vacuum Isolation Valve
 - Hoke® 4500 series bellow seal valve allows for easy replacement of TC gauge tubes



**Teledyne DV-6RS
CP00493**



**Teledyne DV-6S
CP00494**



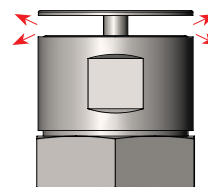
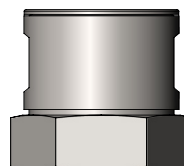
**Televac® VacuMini 2A
CP00391**



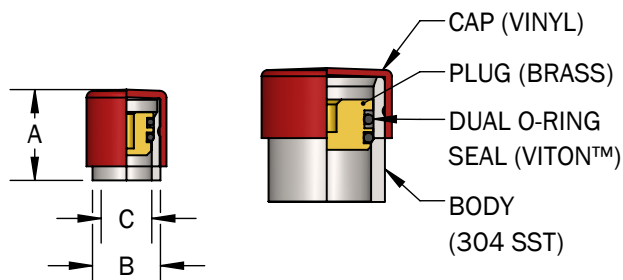
**HOKE® Bellows Seal Valve
CP00602**

Spring Loaded Cap

- Protects systems and employees from an unexpected release of a seal-off valve plug.
- Available for 1" Seal-Off Valves.



Vacuum Seal-Off Valve Assembly

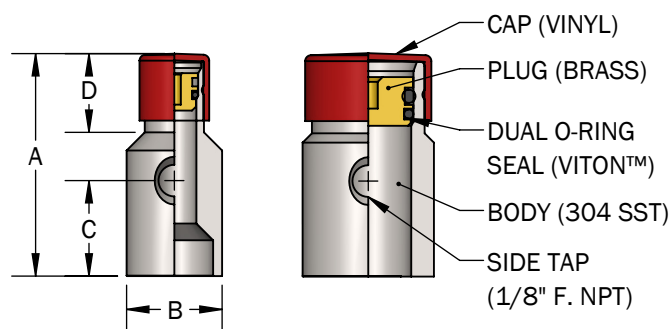


Assembly Part Numbers and Dimensions

P/N	Size	A	B	C
CA03281	1/2"	1 ³ / ₁₆ "	5/8"	7/16"
CA03282	1"	1 ³ / ₈ "	1 ³ / ₁₆ "	7/8"

Assembly Includes: (1) Body, (1) Plug, (2) O-Rings, and (1) Cap. **SST Plugs Available Upon Request.

Vacuum Seal-Off Valve Assembly with Side Tap



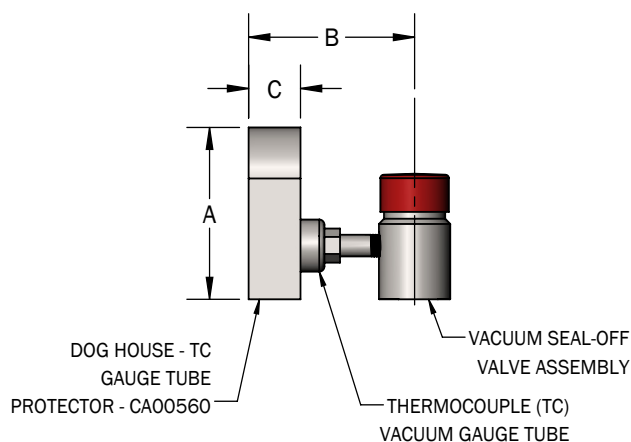
Assembly Part Numbers and Dimensions

P/N	Size	A	B	C	D
CA03283	1/2"	2 ⁹ / ₁₆ "	1"	1 ¹ / ₄ "	1 ³ / ₁₆ "
CA03284	1"	2 ⁹ / ₁₆ "	1 ³ / ₈ "	1 ¹ / ₄ "	1 ³ / ₁₆ "

Assembly Includes: (1) Body w/Side Tap, (1) Plug, (2) O-Rings, and (1) Cap. **SST Plugs Available Upon Request.

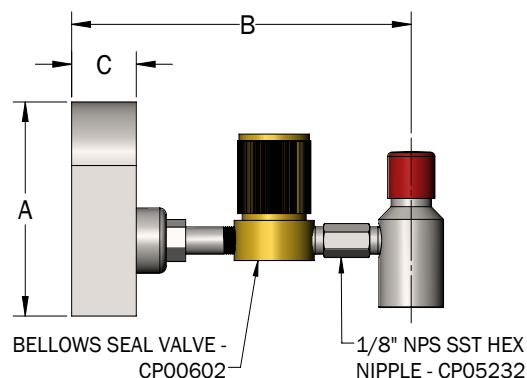
Note: Side Tap intended for use with vacuum gauge or other accessories. Accessories not included.

Vacuum Seal-Off Valve Assembly Dimensions with Standard Accessories



Vacuum Seal-Off Valve with TC Gauge

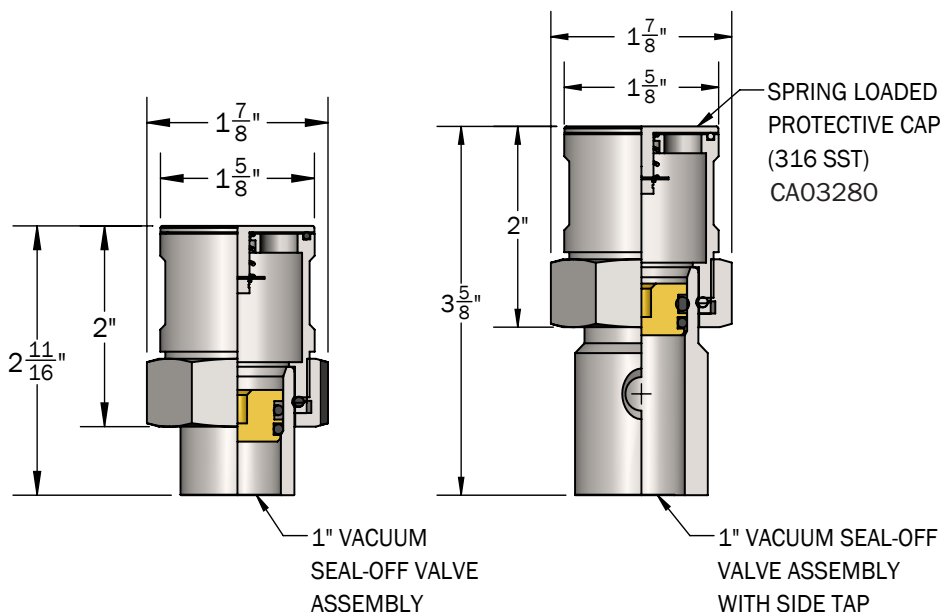
Size	A	B	C
1/2"	3 ³ / ₁₆ "	3"	1"
1"	3 ³ / ₁₆ "	3 ³ / ₁₆ "	1"



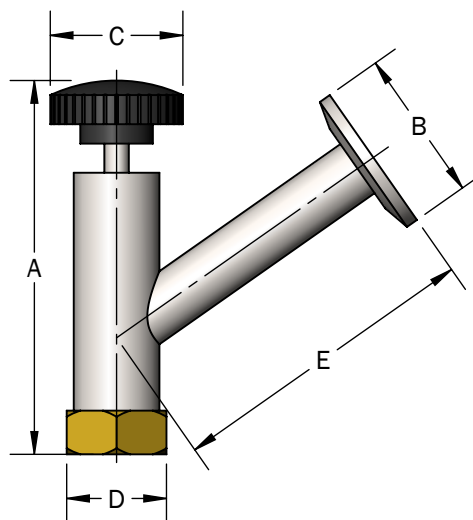
Vacuum Seal-Off Valve with TC Gauge & HOKE®

Size	A	B	C
1/2"	3 ³ / ₁₆ "	5 ¹ / ₄ "	1"
1"	3 ³ / ₁₆ "	5 ⁷ / ₁₆ "	1"

Vacuum Seal-Off Valve with Spring Cap



Vacuum Seal-Off Operator with KF-25 Outlet



Valve Seal-Off Operator with KF-25 Outlet						
P/N	Size	A*	B	C	D**	E
CP00252	1/2"	3 7/16"	1 9/16"	1 3/8"	1 3/16"	3 1/4"
CP00288	1"	4 7/8"	1 9/16"	1 3/8"	1 3/4"	4 1/4"

*The value of dimension A is based on a closed valve operator.

**Dimension D is the Hex.