

# Vacuum Seal-Off Valve and Operator

Discover CryoWorks' range of Vacuum Seal-Off Valves and Operators, designed to deliver reliable and tamper-resistant vacuum entry solutions. Our components offer user-friendly functionality, ensuring seamless operation. Explore our selection of Vacuum Seal-Off Valves, Operators, Spring Loaded Caps, and Vacuum Gauge Tubes, designed to meet the specific needs of your technical applications.

## Vacuum Seal-Off Valve

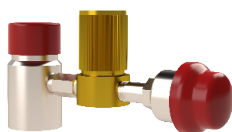
- Pressure:  $1 \times 10^{-8}$  TORR to 5 PSIG.
- Temperature: -20°F to 150°F.
- Leak Rate:  $1 \times 10^{-9}$  STD CC GHe/SEC.
- Connection: Weld (Standard).
- Add Optional SST Spring Loaded Cap for 1" Valve:
  - Provides additional weather protection
  - Evacuation port plug containment in the event of vacuum rupture.



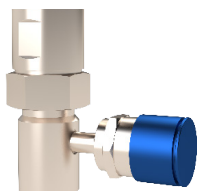
**Vacuum Seal-Off Valve**



**Vacuum Seal-Off Valve with Side Port, with optional DV-6RS TC Vacuum Gauge Tube**



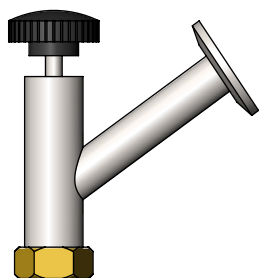
**Vacuum Seal-Off Valve with Side Port, with optional Hoke® Bellows Seal Valve, and DV-6RS TC Vacuum Gauge Tube**



**Vacuum Seal-Off Valve with Side Port, with optional Spring Loaded Cap, and DV-6S TC Vacuum Gauge Tube**

## Vacuum Seal-Off Operator

- Seamless connection between seal-off valve and vacuum pump, with easy seal plug removal and replacement during pump down.
- Available in 1/2" & 1" sizes.
- Various tube connection options available for vacuum pumps including: KF-25 ISO Flange ends (Standard).



**Vacuum Seal-Off Operator with KF-25 Outlet**



**View available options and order via [Shop.CryoWorks.Net](http://Shop.CryoWorks.Net)**

## Thermocouple (TC) Vacuum Gauge Tube

- Ability to check vacuum reading after being sealed.
- Ideal for trouble shooting and for system audits.
- Popular Vacuum Gauge Tubes:
  - Teledyne DV-6RS: 0-1000 mTorr, 1/8" NPT, Ruggedized.
  - Teledyne DV-6S: 0-1000 mTorr, 1/8" NPT, Weather Proof Outdoor, Rugged Construction with Protective Cap.
  - Televac® VacuMini 2A:  $1 \times 10^{-3}$  up to 20 Torr
- Optional Thermocouple Vacuum Isolation Valve
  - Hoke® 4500 series bellow seal valve allows for easy replacement of TC gauge tubes



**Teledyne DV-6RS CP00493**



**Teledyne DV-6S CP00494**



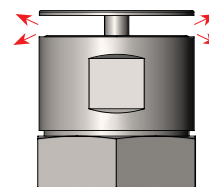
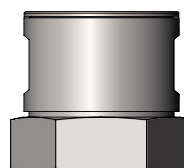
**Televac® VacuMini 2A CP00391**



**HOKE® Bellows Seal Valve CP00602**

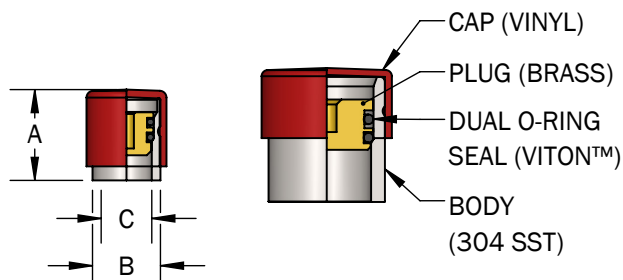
## Spring Loaded Cap

- Protects systems and employees from an unexpected release of a seal-off valve plug.
- Available for 1" Seal-Off Valves.



# Vacuum Seal-Off Valve and Operator

## Vacuum Seal-Off Valve Assembly

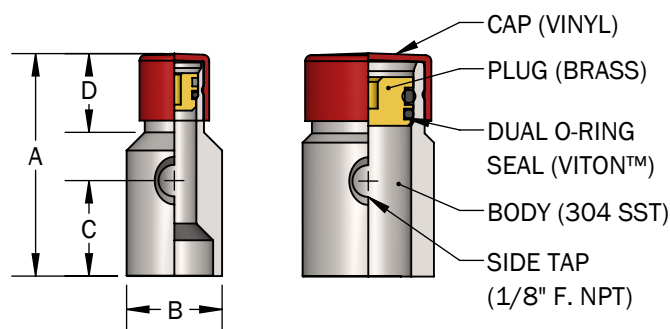


### Assembly Part Numbers and Dimensions

P/N	Size	A	B	C
CA03281	1/2"	1 <sup>3</sup> / <sub>16</sub> "	5/8"	7/16"
CA03282	1"	1 <sup>3</sup> / <sub>8</sub> "	1 <sup>3</sup> / <sub>16</sub> "	7/8"

**Assembly Includes:** (1) Body, (1) Plug, (2) O-Rings, and (1) Cap. \*\*SST Plugs Available Upon Request.

## Vacuum Seal-Off Valve Assembly with Side Tap



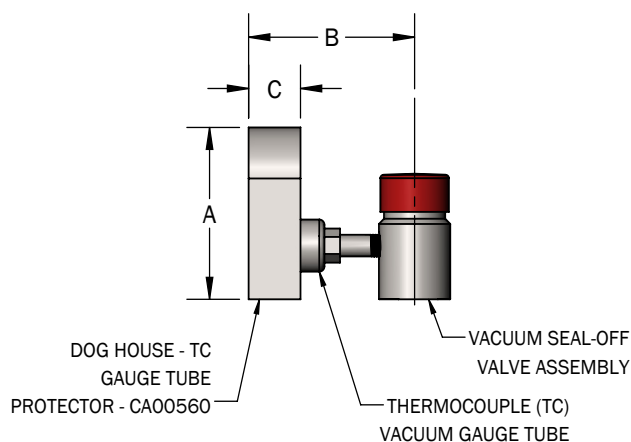
### Assembly Part Numbers and Dimensions

P/N	Size	A	B	C	D
CA03283	1/2"	2 <sup>9</sup> / <sub>16</sub> "	1"	1 <sup>1</sup> / <sub>4</sub> "	1 <sup>3</sup> / <sub>16</sub> "
CA03284	1"	2 <sup>9</sup> / <sub>16</sub> "	1 <sup>3</sup> / <sub>8</sub> "	1 <sup>1</sup> / <sub>4</sub> "	1 <sup>3</sup> / <sub>16</sub> "

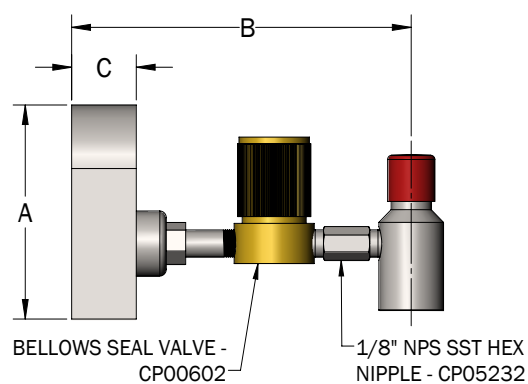
**Assembly Includes:** (1) Body w/Side Tap, (1) Plug, (2) O-Rings, and (1) Cap. \*\*SST Plugs Available Upon Request.

**Note:** Side Tap intended for use with vacuum gauge or other accessories. Accessories not included.

## Vacuum Seal-Off Valve Assembly Dimensions with Standard Accessories

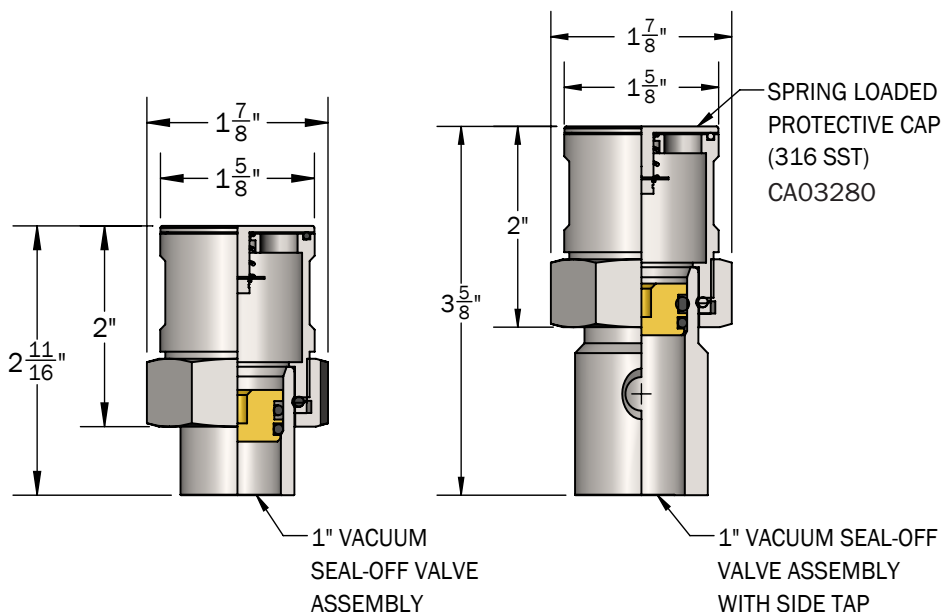


Vacuum Seal-Off Valve with TC Gauge			
Size	A	B	C
1/2"	3 <sup>3</sup> / <sub>16</sub> "	3"	1"
1"	3 <sup>3</sup> / <sub>16</sub> "	3 <sup>3</sup> / <sub>16</sub> "	1"

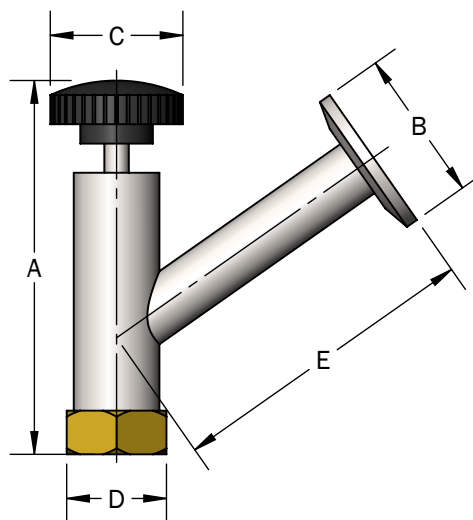


Vacuum Seal-Off Valve with TC Gauge & HOKE <sup>®</sup>			
Size	A	B	C
1/2"	3 <sup>3</sup> / <sub>16</sub> "	5 <sup>1</sup> / <sub>4</sub> "	1"
1"	3 <sup>3</sup> / <sub>16</sub> "	5 <sup>7</sup> / <sub>16</sub> "	1"

## Vacuum Seal-Off Valve with Spring Cap



## Vacuum Seal-Off Operator with KF-25 Outlet



Valve Seal-Off Operator with KF-25 Outlet						
P/N	Size	A*	B	C	D**	E
CP00252	1/2"	3 <sup>7</sup> / <sub>16</sub> "	1 <sup>9</sup> / <sub>16</sub> "	1 <sup>3</sup> / <sub>8</sub> "	1 <sup>3</sup> / <sub>16</sub> "	3 <sup>1</sup> / <sub>4</sub> "
CP00288	1"	4 <sup>7</sup> / <sub>8</sub> "	1 <sup>9</sup> / <sub>16</sub> "	1 <sup>3</sup> / <sub>8</sub> "	1 <sup>3</sup> / <sub>4</sub> "	4 <sup>1</sup> / <sub>4</sub> "

\*The value of dimension A is based on a closed valve operator.

\*\*Dimension D is the Hex.